



Material Requirements Planning (MRP) Tool

Overview

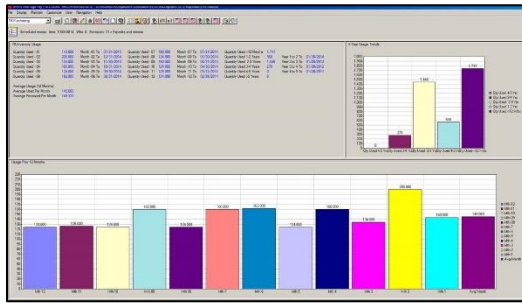
This toolset augments XA/MRP with some value-added extensions and other functions to help planners support the review and execution of exceptions in MRP. This tool assists with providing the planner with valuable information when releasing orders. It also provides ability to see information like source of demand easily. If you are project based, this tool identifies the requirements down to the top-level piece of equipment. Use and demand is summarized in meaningful buckets so that trends and overall demand is easily seen. For planners using this to support fabrication and other processes, information like raw material is displayed so that grouping of orders can be done to support common material. For procurement this tool provides visibility on products that have multiple sources, and price breaks.

This product evolved over 10 years of working with planners at XA customers to leverage the Power of XA/IDF and the GUI frame work. Typically, this product is supported with a training class to customize the execution of the planning exceptions to your organization and assist with a streamlined transition.

TriMin has been offering solutions to manufacturing companies for over 30 years. Contact us today to see if we can help you!

Business Needs

- Tool to bring full planning functions into IDF.
- Fill in gaps between material planning needs.
- Enhance the planning and release experience with functions deployed using IDF (No more green screen!).



View over Order Recommendations showing extended fields and visual aids

Our focus is on providing functionally rich solutions and superior customer support. The combination of technical and industry expertise is what sets us apart from many software companies. Many of our tools are in use by dozens of other XA customers and have evolved to extend XA functionality.

Uses

- Provide buyers with a “one stop shop” to execute release of PO’s including printing and acknowledgement with supplier.
- Provides manufacturing planning with ability to group and see all demand for product so that order sizing can be maximized.
- Helps determine source of demand to ensure requirements are accurate.
- Helps understand the demand of items over a long period of time to determine if lot sizing, minimum or safety stock is accurate.
- Provides placeholders for planning notes so that when having dialog with planners, the shop floor or supplies can be seen by all.
- Allows environments where planning is focused around projects and large equipment to focus on project-based exception handling, order release, and expediting.

Recovery Due Date	Expedite Days	Exception	Run (Source) Of Demand	Category	Blkt	Blk #	Planning Notes	Planning Note	Note History
08/28/2013	8	Expedite	Sts1408 Sts14...	BOOM				8/21 - Date OK for Production	
08/14/2013	7	Expedite	Sts1405	Machine		7		8/22 - Revised PO to Pick Up Schedule	
08/14/2013	8	Expedite	Sts1405	Machine		8		8/20 - Revised PO to Pick Up Schedule	
08/14/2013	10	Expedite	Sts1405 Sts14...	Machine		3		8/20 - Date OK for Production	
08/21/2013	10	Expedite	Sts1405	Machine		9		8/20 - Date OK for Production	
08/21/2013	6	Expedite	Sts1406	Machine		10		8/14 - Date OK for Production.	
08/21/2013	7	Expedite	Sts1406	Machine		7		8/20 - Date OK for Production	
08/21/2013	7	Expedite	Sts1406	Machine		11		8/14 - Date OK for Production.	
08/21/2013	7	Expedite	Sts1406	Machine		12		8/20 - Date OK for Production	
10/14/2013	7	Expedite	Forecast	Forecast				8/21 - Will Revise Due Date Closer to Production ...	
10/14/2013	8	Expedite	Dts1401	Machine				8/21 - Will Revise Due Date Closer to Production ...	
10/14/2013	14	Expedite	Dts1401	Machine				8/21 - Will Revise Due Date Closer to Production ...	
08/09/2013	11	Expedite	Boom1406 Bo...	BOOM				8/20 - Working W/Th Mark Benda to Expedite	
08/16/2013	24	Expedite	Ntb1402 Sts14...	NTB				8/20 - Working W/Th Mark Benda to Expedite	
08/16/2013	25	Expedite	Sts1406 Sts14...	Machine		5		8/20 - Working W/Th Mark Benda to Expedite	
08/28/2013	32	Expedite	Ntb1403 Sts14...	BOOM				8/20 - Working W/Th Mark Benda to Expedite	
09/12/2013	43	Expedite	Ntb12/16 Ntb1...	NTB				8/20 - Working W/Th Mark Benda to Expedite	
03/25/2013	144	Expedite		Service				WHSE 5 PO order date acknowledged	
03/25/2013	144	Expedite		Service				WHSE 5 PO order date acknowledged	
08/02/2013	22	Expedite	Sts1404 Sts14...	Machine		1		8/21 - Best Date . Shipping Air Freight from Engla...	
08/20/2013	4	Expedite	Sts1407 Sts14...	Machine				8/19 Date OK for Production 7/15	
08/27/2013	3	Expedite	Forecast	Forecast				8/26 Date OK for Production 7/15	
08/16/2013	8	Expedite	Sts1406 Sts14...	Machine				8/21 - Moved Date to 8/28 per Vendor's Request...	
08/16/2013	8	Expedite	Sts1406 Sts14...	Machine				8/21 - Moved Date to 8/28 per Vendor's Request...	

Requirements and usage shown in user friendly graphs and summaries to help make decisions quickly